

October 29, 2020

6:00 PM

40% Construction Community Meeting

Gateway & Cherokee Consolidation

Welcome! This meeting will begin shortly.





**Orange County
Public Schools**

Gateway & Cherokee Consolidation

40% Construction Community Meeting

Meeting Agenda

October 29, 2020, 6:00 PM

- Welcome – School Board Member Dr. Kathleen “Kat” Gordon
- Introductions – Jessma Lambert, Facilities Construction Planning
- Project Update –  
- School Naming Input
- Questions and Answers
- Adjournment

***Remarks by
Area Superintendent,
West Learning Community***

Dr. Jennifer-Cupid McCoy



***Welcome Message from
District 5 Board Member
Dr. Kathleen "Kat" Gordon***

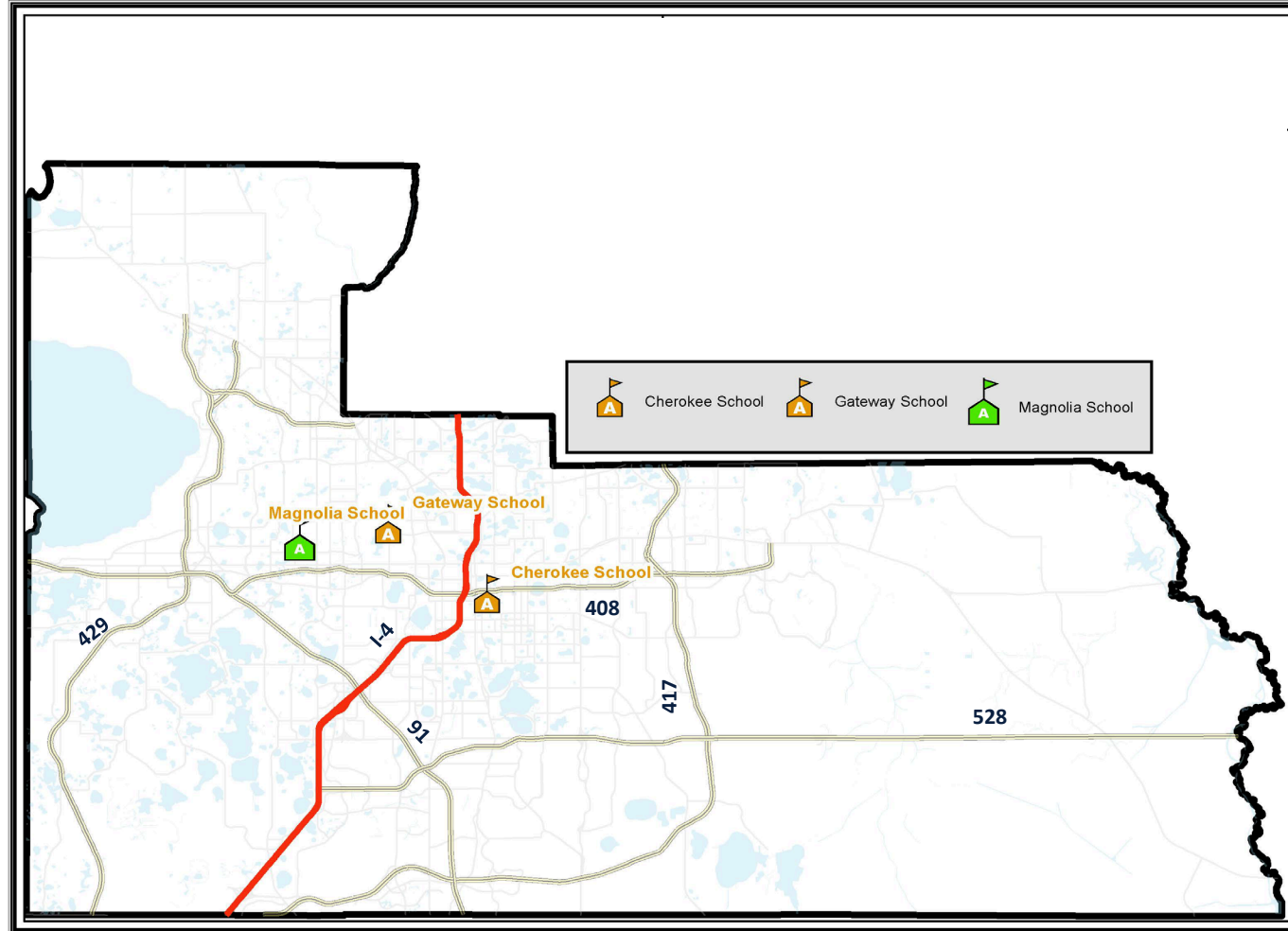


***Introductions by
Facilities Director,
Facilities Construction Planning
Jessma Lambert***



Orange County Public Schools

County Overview Map



Orange County Public Schools

Three Separate ESE Campuses



Magnolia School

- 132 Middle and High School Students
- Circa 1970's & 80's Campus
- Residential Neighborhood
- **Severe Cognitive Disabilities**



Cherokee School

- 48 Elementary School Students
- Circa 1926 Campus
- Residential Neighborhood off 408
- **Severe Behavior Disorders**

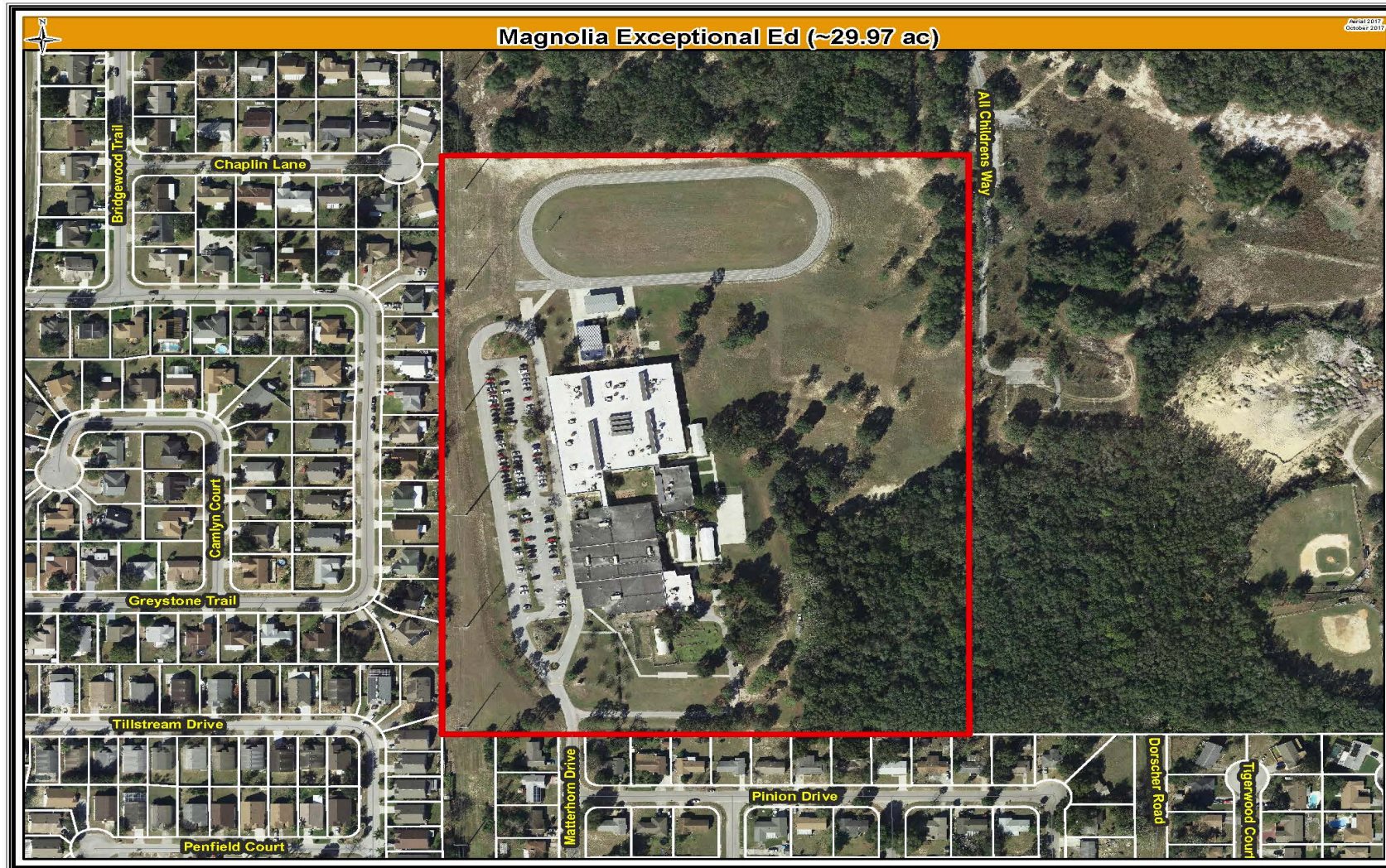


Gateway School

- 59 Middle and High School Students
- Circa 1961 Campus
- Industrial Park Location
- **Severe Behavior Disorders**

Orange County Public Schools

Site Aerial Map



Orange County Public Schools

Master Site Plan

Project Data

Site Area
30.02 Acres

Magnolia School
Grades 6-12

Student Capacity
120 Students

Building Area
70,674 Gross SF

Parking Provided
160 Spaces

Learning Center
Grades K-12

Student Capacity
159 Students

Building Area
74,713 Gross SF

Parking Provided
163 Spaces



Orange County Public Schools

Site Plan – Learning Center

Grades 6-12 PE play field
(secured)

Parent/Visitor Parking

Bus Loop at "Front Door"

K5 PE play field (secured)



Grades 6-12 Entry

K5 Entry

Learning Center

Orange County Public Schools

Rendering



Orange County Public Schools

Similar Interior Examples



Admin Reception



Multi-Purpose Room

Orange County Public Schools

Similar Interior Examples



Media Center K5



TV Studio

Orange County Public Schools

Similar Interior Examples



K5 Classroom



K5 Science

Orange County Public Schools

Similar Exterior Examples



Covered Play – K5



Playground – K5

Orange County Public Schools

Similar Interior Examples



Science 6-12



Art 6-12

Orange County Public Schools

Similar Interior Examples



Media Center 6-12



Kitchen

Orange County Public Schools

Similar Interior Examples



Culinary Arts 6-12



Industrial Arts 6-12

Orange County Public Schools

Similar Interior / Exterior Examples



Hardcourt



Half-Court Gym 6-12

Orange County Public Schools

Sustainability



Site

- Native/low water plants – reduce water consumption
- Low Impact Design (LID) stormwater design

Building

- 10% more energy efficient than ASHRAE 90.1 standard
- Lighting system and power outlets designed to turn lights and power off in unoccupied spaces (energy reduction)
- High Efficiency Chillers (10% energy reduction)
- Light colored roof to reduce heat gain and improves energy performance
- Energy Star rated equipment
- Water saving toilets, faucets, and fixtures
- All classrooms have daylighting
- Over 75% of ALL spaces have daylighting
- Thermal efficient windows/glazing

Orange County Public Schools

ESE Campus Proposed Schedule

Milestones	Dates
Planning	January 2017 - March 2018
Design & Bid	May 2018 - April 2019
Construction: Magnolia School	May 2019 - May 2020
Construction: Learning Center	June 2020 - August 2021
New Magnolia School Opens	August 2020
Learning Center Opens	August 2021

Orange County Public Schools

Aerial Site Photos / Development Progress



April 2020



ESE Campus Consolidation

4.22.20



Orange County Public Schools

Aerial Site Photos / Development Progress



May 2020



ESE Campus Consolidation

5.17.20



Orange County Public Schools

Aerial Site Photos / Development Progress



June 2020



ESE Campus Consolidation

6.22.20



Orange County Public Schools

Aerial Site Photos / Development Progress



July 2020



ESE Campus Consolidation

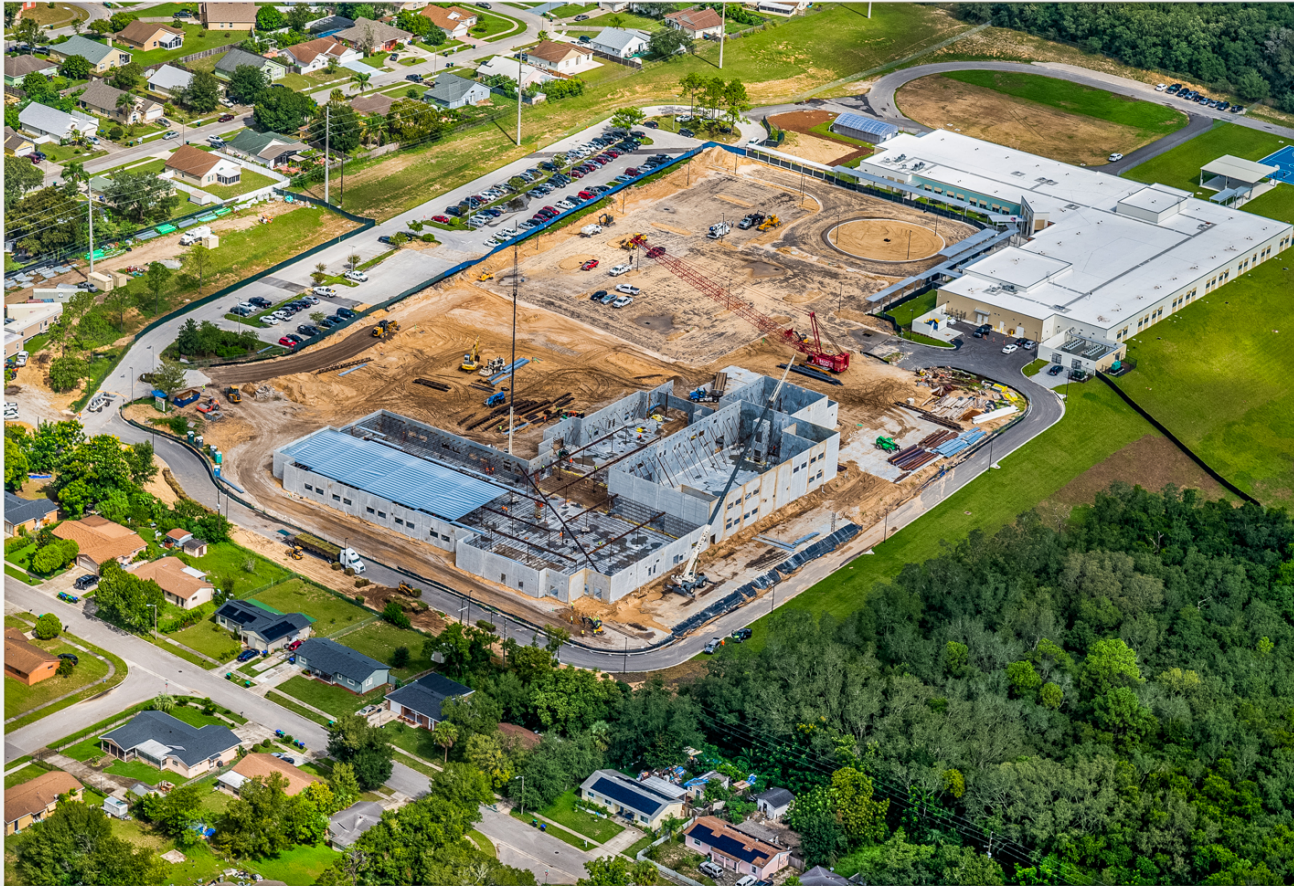
7.20.20



Learning Center

Orange County Public Schools

Aerial Site Photos / Development Progress



August 2020



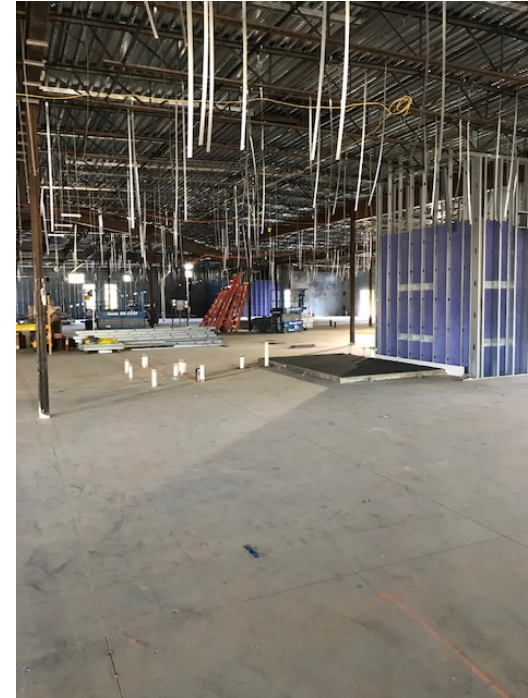
ESE Campus Consolidation

8.24.20



Orange County Public Schools

Aerial Site Photos / Development Progress



September 2020



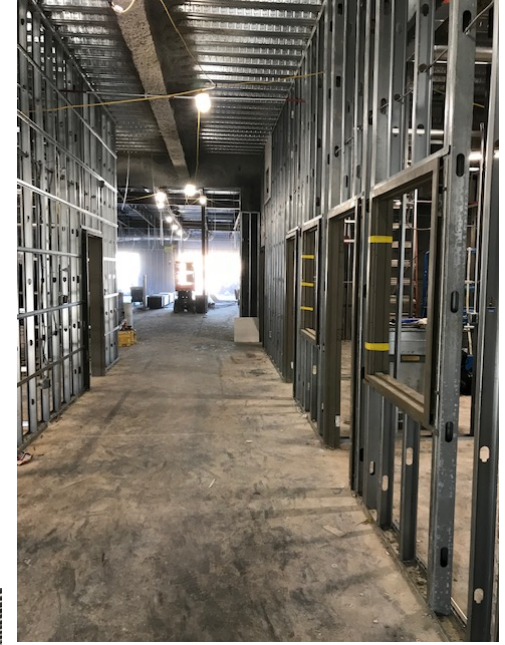
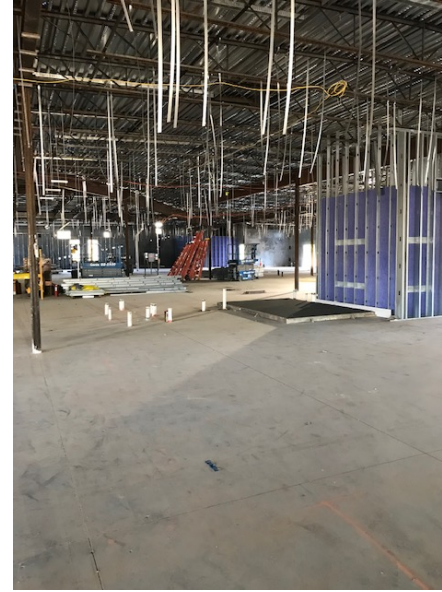
ESE Campus Consolidation

9.22.20



Orange County Public Schools

Aerial Site Photos / Development Progress



October 2020



ESE Campus Consolidation

10.23.20



Orange County Public Schools

Upcoming Milestones



- HVAC Chiller Start-Up - November 2020
- Complete Drywall Finish - December 2020
- Permanent Power - December 2020
- Landscape & Parking - April 2021
- Substantial Completion Date May 14, 2021

Orange County Public Schools

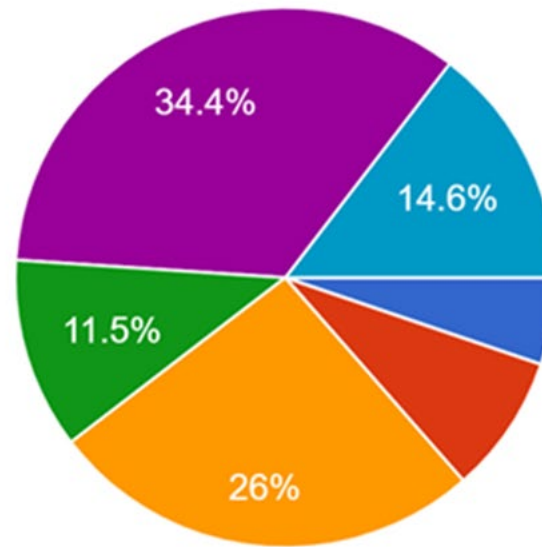
Gateway & Cherokee Consolidation | School Renaming Process

- The school renaming process has begun.
- Both school's community stakeholders were surveyed October 5 – 9, 2020.
- Forty-three (43) potential names were submitted and reviewed by the renaming committee which consisted of seven school community stakeholders:
 - SAC and PTA members
 - Student
 - Staff and parents
- Renaming committee narrowed list down to six names for a final vote by the community.
- School's community stakeholders cast final vote for second survey October 15 – 21, 2020.
- Top three (3) recommended names based on input will be presented for the Board's review.

Orange County Public Schools

Gateway & Cherokee Consolidation | School Renaming Process Results

- Survey 2 generated 96 responses
- Top three names
 - AIM Academy K-12 – 34.4 %
 - Silver Pines Academy – 26%
 - Journeys Academy – 14.6%



- Pine Hills Academy
- Harmony Way Academy
- Silver Pines Academy
- Achievers Academy
- AIM Academy K-12
- Journey's Academy



Thank You

Thank you to Orange County taxpayers for the ½ penny sales tax, which makes this construction possible.

Questions & Answers

**Facilities contact person for School Board District 5
Jessma Lambert**

**Facilities Director, Construction Planning
407-317-3700 ext.2025047**